

BOSCHERT

***CNC Punching Machine with
Automatic Tool Changer***

MP® Series



Boschert MP Series Productive • Affordable Punching

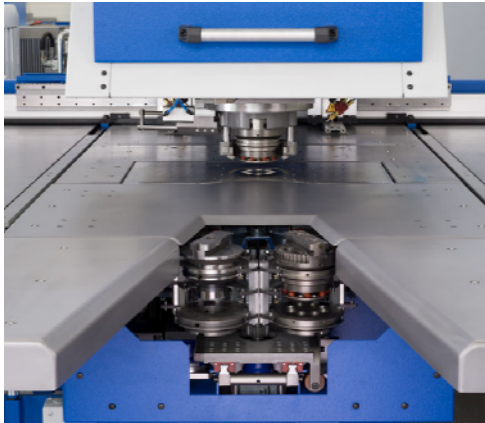
- Automatic Tool Change in under 5 seconds
- 8-Position ATC carousel for single or multi-tools
- Open C-frame construction
- 36 Ton capacity
- Working ranges to 60" x 120"
- Tool Sizes to 4" round
- RevoTool multitool solution available (up to 64 tools possible)
- Full Rotation to ram standard
- 800 strokes per minute punching
- Trumpf style tooling system
- Automatic repositioning standard



simply better!

BOSCHERT

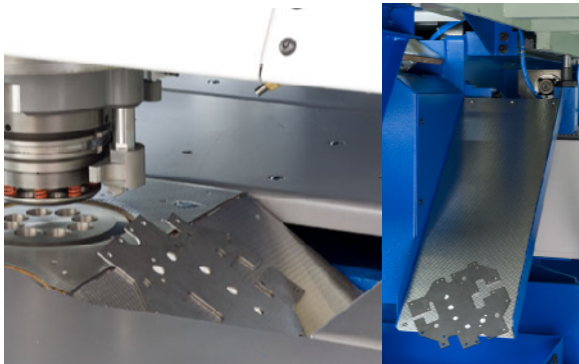
**MP® SERIES of CNC
Punching Machines with
Automatic Tool Changer**



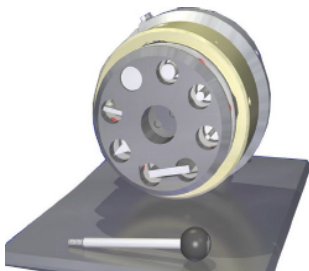
Front View Automatic Tool Changer



Quick Change Tool Cassettes hold the punch, die and stripper. They are set off-line so as to not limit machine run time.



Programmable Parts Chute measures 8" x 12"



Revotool with 4, 6, 7 or 8 tools for material up to 1/4" thick. Maximum diameter of the punch is 1", 3/4" or 5/8".

Specifications:

Working range:

MP 1250 x 2500 50" x 100"
MP1500 x 3000 60" x 120"

Performance:

Maximum sheet thickness 1/2"
Maximum sheet length 33' w/ repo.
Maximum punching force 36 tons
Maximum workpiece weight 440 lbs.
Size of programmable parts chute ... 8" x 12"
Maximum punch diameter 4"

Rotation:

Full Stepless Rotation 306 degrees
Rotation Axis Speed 45 RPM

Tool change time:

Auto 5 sec.
RevoTool (4,6,7 or 8 tools) 2 sec.

Maximum programmable stroke length 3.5"
Maximum positioning speed

X-axis 2360 ipm
Y-axis 1180 ipm
Diagonal 3350 ipm

Positioning accuracy +/- 0.004"

Repeatability +/- 0.001"

Control Boschert Graphic w/ RS232

Type of drives AC digital servo

Height of table above floor 35.4"

Width of table (X-axis) 158"

Depth of table (Y-axis)
MP1250 63"

Approximate floor space

MP1250 26' x 20' x 7'H

MP1500 30' x 21' x 7'H

Approximate weight

MP 1250 36,000 lb.

MP 1500 38,250 lb.



simply better!

Boschert Precision Machinery, Inc.
12400 W. Cameron Avenue
PO Box 409
Butler, WI 53007-0409
800-354-3737 FAX 800-354-6920
sales@boschertusa.com
www.boschertusa.com

