

**"FROM START TO FINISH,
ACCEPT NO SUBSTITUTES!"**



METAL | 2022 PUBLICATION



ABOUT TIMESAVERS

Timesavers manufactures some of the most powerful and efficient metalworking solutions in the industry. Our metal grinders and deburring machines are fully customizable and can be equipped with a wide variety of different head types to automate almost any metalworking project. We understand that different projects and executions require different technology, and that's why we also offer the industry's largest range of machine configurations and features (including head configurations, wet-vs-dry, abrasive selection, etc.) to ensure that our metal grinders meet and exceed your expectations and demands. Make no mistake, nobody offers a wider selection of versatile and high-quality automated grinding solutions than Timesavers.

TIMESAVERS | PRODUCT SUMMARY



METAL

CREATIVITY AND TECHNOLOGY GO HAND-IN-HAND AT TIMESAVERS

We subscribe to the premise that different options are required for different applications and there is nobody who offers a broader range of machines than Timesavers. In addition, Timesavers also develops and produces machines for special applications up to complete turnkey project solutions with innumerable types of peripheral equipment. Timesavers thinks in terms of solutions and likes to meet your challenge with vigour and enthusiasm.

HEAD TYPES:

- + Wet
- + Dry
- + Wide Belt
- + Brush
- + Hammerhead/Slag Grinder

MACHINE LINES:

- + Compact 9 Series
- + 11 Series
- + 12 Series
- + 22 Series
- + 32 Series
- + 42 Series
- + Rotary Brush
- + 31 & 41 Series
- + Manual Grinder
- + Hammerhead/Slag Grinder
- + Niagara Dust Collection



WOOD

TIMESAVERS IS THE LEADER IN WOOD SANDING MACHINERY

Timesavers has over 70 years of experience in manufacturing woodworking machinery. Our wood sanders are built with the automation of professional craftsmanship in mind, utilizing the best and most durable components to guarantee peerless performance and reliability. We understand full well that each woodworking project has unique requirements and specifications, and that's why we offer an extensive variety of head types and machine lines to match your needs. Timesavers will stop at nothing to ensure that you find the perfect machine for your application, saving you valuable time and increasing your bottom line in the process.

HEAD TYPES:

- + Knife Planer
- + Wide Belt
- + Segmented Polisher
- + Orbital
- + Brush Machines
- + CNC Sander
- + Top/Bottom

MACHINE LINES:

- + SpeedSander
- + 13 Series
- + 23 Series
- + 33 Series
- + 53 Series
- + Yieldsaver
- + Moulding Sander



9

.....
COMPACT
SERIES



11

.....
SERIES



12

.....
SERIES



21/22

.....
SERIES



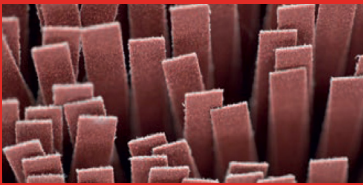
32

.....
SERIES



42

.....
SERIES



TIMESAVERS: THE BEST WHEN IT COMES TO METAL MACHINING EQUIPMENT

Timesavers offers solutions for deburring, edge rounding, finishing and precision grinding of Zintec, aluminum, copper, mild steel, stainless steel, titanium and alloy parts.

DEBURRING WITH A TIMESAVERS DEBURRING MACHINE

Deburring is the removal of irregularities on metals. They can mainly be found on the edges of the material and are often caused by machining work such as laser, water jet, punched or plasma cutting. Discover Timesavers' broad machine line for effective and efficient deburring.

GET THE BEST FINISH WITH TIMESAVERS

Machine finishing applies to, for example, stainless steel and aluminum in two versions: a hairline and a grain finish. Timesavers offers a wide range of quality finishes with abrasive belts and brushes.

ARE YOU LOOKING FOR THE MOST BEAUTIFUL AND BEST ROUNDING OF METAL?

A radius is created on the edge of the metal during edge rounding of metal products. This ensures that the sharpness of the edge is removed and it is given a uniform rounding. Timesavers offers perfection in edge rounding with a radius of up to two mm in a single pass.

PRECISION GRINDING WITH TIMESAVERS' INNOVATIVE GRINDING TECHNOLOGY

Surplus material such as the oxide layer is removed from metal products through surface grinding when you apply precision grinding.

SLAG REMOVAL

Slag occurs when metal melts because of, for example, autogenous and plasma cutting. Slag removal deserves a special approach for which Timesavers offers the ultimate solutions.

REMOVAL OF LASER OXIDE SKIN WITH TIMESAVERS' RECENT INNOVATION

Laser oxide occurs on metal and stainless steel when laser cutting using oxygen, and it must be removed for subsequent coating processes. Timesavers has developed a perfect solution for the removal of laser oxide.



ROTARY
BRUSH



31
(LYNX)
.....
SERIES



41
(PUMA)
.....
SERIES



MANUAL
GRINDER



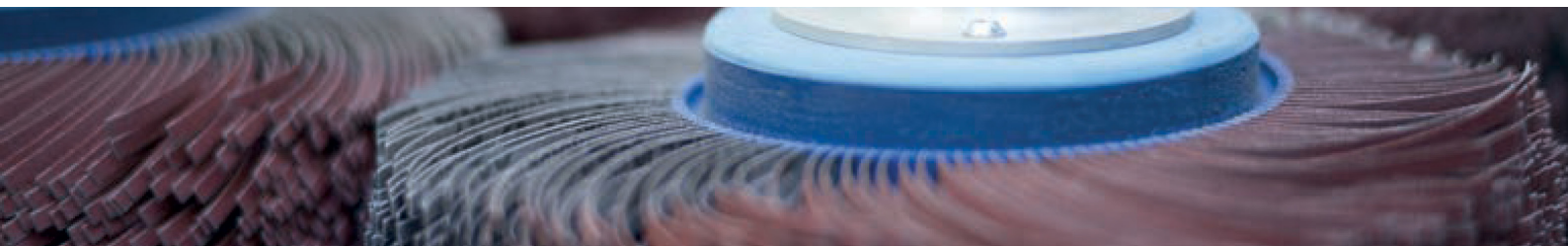
HAMMERHEAD/
SLAG GRINDERS

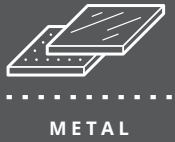


DUST
COLLECTION

Table of contents

			Deburring	Finishing	Edge rounding	Laser oxide removal	Precision grinding	Slag removal
Compact 9 Series	page 6		0	0				
11 Series	page 7		0	0				
12 Series	page 6		0	0	0			
21/22 Series	page 8		0	0	0			
32 Series	page 10		0	0	0			0
42 Series	page 12		0	0	0	0		0
Rotary Brush	page 14		0		0	0		
31 Series (LYNX)	page 16		0	0	0			
41 Series (PUMA)	page 17		0	0	0		0	
Manual Grinder	page 18		0	0	0			
Hammerhead/Slag Grinders	page 20		0		0			0
Dust Collection	page 21							





COMPACT 9 SERIES

Economical machines, ideal for deburring, finishing, and edge breaking of small parts. The combination of a small footprint and minimal power requirements allow these models to be easily placed where the need is greatest. Available with a belt head & top brush assembly gives users flexibility based on application.

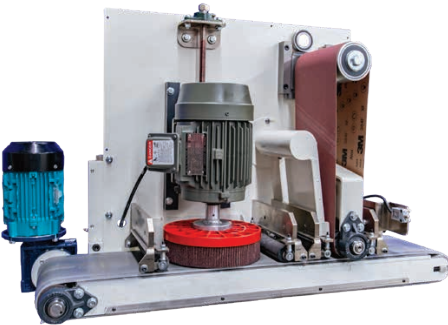


STANDARD VERSION:

- + Rugged compact design
- + Frequency controlled transport motor, 1 - 17 fpm.
- + Automatic setting of the table height: 0 - 4".
- + Electronic oscillation.
- + U.L. Certified.

OPTIONS:

- + Vacuum bed for small parts
- + Dust Collector
- + Variable speed control for conveyor or abrasive belt



Available configurations:

D	9"
DD	9"
DTb	9"

Specifications:

Number of heads	1 - 2
Head types	Drum, Top Brush
Machine width	9"
Disc diameter	10"
Main drive motor	7.5 HP Abrasive, 0.75 HP Top Brush

11/12 SERIES

Economical machines, ideal for deburring and finishing small parts. The combination of a small footprint and minimal power requirements allow these models to be easily placed where the need is greatest. Simple operation and controls require minimal training for an operator to effectively produce finished parts.



The 11 series machine is compact and requires a minimum of energy, and therefore the machine can be installed everywhere.

The 11 series operates wet and has an integrated product dryer and paper belt filter. The machine is easy to operate. After just a few minutes of training, a perfectly finished product can already be produced. The 11 series is delivered with a 9" wide conveyor belt.

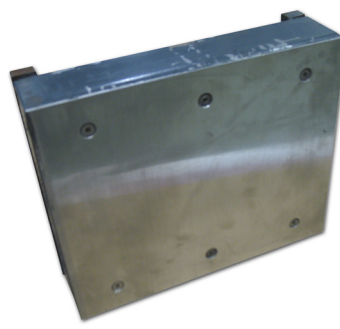
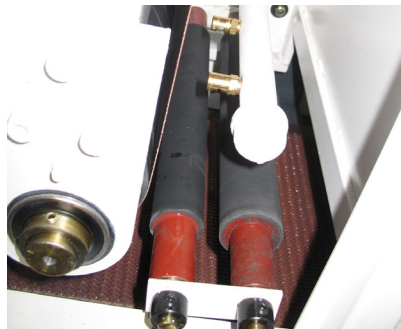


The 12 series is available in 9", 25" and is suitable for the deburring and finishing of small parts.

This dry working deburring machine has an abrasive belt, brush or both and is suitable for deburring a large number of metals. If the machine is set up with a grinding belt and a rotating disc, the vertical burrs are removed by the grinding belt and the side burrs are removed by the disc. The disc also ensures product edge rounding at the same time.

Efficiency and ease of use.

Management of all Timesavers machines is ergonomic and intuitive. The 11/12 series are perfect examples of this.

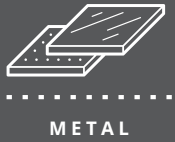


Available configurations:

		Wet & Dry	Dry Only	Dry Only
Dry Only	Rd	9"		
Dry Only	DRd	9"		
	D	9"	25"	37"
	B		25"	
	DD	9"	25"	37"
	DB		25"	37"

Specifications:

Number of heads	1 - 2
Head types	Drum, Brush
Machine width	9", 25", 37"
Disc diameter	18"
Main drive motor	5, 10, 15 HP



21/22 SERIES

The 21/22 Series can be configured for metal finishing or deburring at an affordable price, with many standard features that other companies only offer as options. This versatile group of machines is available in up to three widths, and up to three heads in a combination of drum and brush heads (Wet version single drum head only).



Reduction of costs and increase of efficiency

By combining an abrasive belt and a brush, products can be deburred and rounded in one go. The machine is produced for deburring laser cut metal and edge rounding of sides and all of this while incurring very low costs.

Available configurations:

Configuration	Head Type	Width 1	Width 2	Width 3
21 Series Only	D	25"	37"	
22 Series	D	25"	37"	52"
	B	25"	37"	52"
	DB	25"	37"	52"
	DD	25"	37"	52"
	BB	25"	37"	52"
	DDB	25"	37"	
	DDD	25"	37"	52"
	DBB	25"	37"	52"



Specifications:

	22 Series	21 Series
Number of heads	1 - 3	1
Head types	Drum, Brush	Drum
Machine width	25", 37", 52"	25", 37"
Abrasive belt length	75", 103"	60"

STANDARD VERSION:

- + Rigid table installed on 4 synchronous spindles.
- + Frequency controlled transport motor, 15 - 45 fpm.
- + Automatic setting of the table height: 0 - 6".
- + Electronic oscillation.
- + Dust extraction on dry models.
- + U.L. Certified.

APPLICATIONS AND BENEFITS:

- + Removal of vertical burrs from punch, laser and water jet cut parts.
- + Stainless steel, steel, aluminum, copper, etc.
- + Deburring and surface finishing in one go using several heads.
- + Very low operating costs and a high production capacity.
- + Air Knife Dryer (21 Series)
- + Integrated filter system (21 Series)



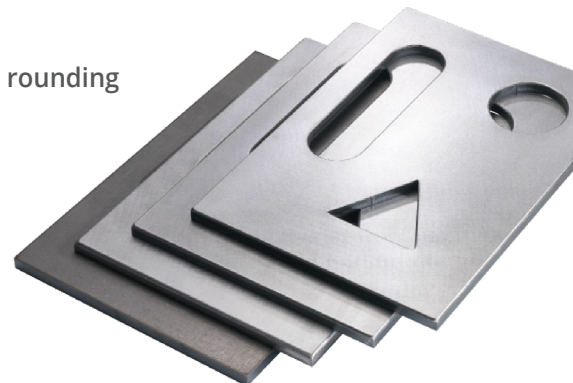
Deburring



Finishing

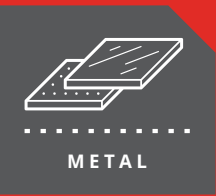


Edge rounding



Specifications:

	22	21
Table opening	0-6"	0-5"
Throughput	15 - 45 fpm	15 - 30 fpm
Adjustable contact roller/brush diameter	4, 6, 8, 11"	6"
Applications	Deburring, Finishing and Edge Rounding	



32 SERIES

The 32 series is a compact dry operating machine for deburring, edge rounding and/or finishing different materials. The machine offers the perfect price to performance ratio.



The 32 series has been developed based on our European partner's Red Dot Award winning 42 series and is equipped with Timesavers RB technology

The machine forms the new standard in deburring, edge rounding and finishing technology for a broad range of materials. This compact machine can be supplied with the rotary brush attachment.

Very small parts can be machined due to the use of a vacuum table

Much attention has been paid to ease of use and user comfort with regard to this stylish and efficient deburring and finishing machine. The result is a machine that can be operated intuitively and easily. In addition, consumable use is low, the machine is energy efficient and the price-quality ratio is optimal. The machining process can be easily observed because of the angled control panel and the large wind.

The ultimate deburring and finishing machine

Our innovative high-quality deburring and rounding technologies ensure that the latest deburring machine from the Timesavers 32 series is the perfect machine for the metal machining industry.



Available configurations:

RB	43"
DRB	43"
DRBD	43"

Specifications:

Number of heads	1 - 3
Head types	Drum, Rotating Brush
Machine width	43"
Main drive motor	10 HP
Number of brushes	4 (quick to change brush system)

STANDARD VERSION:

- + Machine working width: 43".
- + Efficient ergonomic operation through a user friendly Siemens HMI (installed under a 45° angle for a clear view of the machining process).
- + Vacuum table for machining smaller products (2" x 2").
- + The vacuum table has an integrated cleaning cycle.
- + LED beam on the infeed side that indicates the machine status.
- + Frequency-controlled motors for flexibility during the process.
- + Easy to replace brush units.
- + Various brush types are possible for multifunction use of materials.
- + Automatic adjustable table height: 0 - 4".
- + Conveyor speed up to 25 fpm.
- + U.L. Certified.

APPLICATIONS AND BENEFITS:

- + Contact time with brushes: 24".
- + The 4 brushes have a total of 50 sq. ft. of abrasive agent.
- + For the removal of burrs on laser, water jet, punched and cut products.
- + Material that can be machined: stainless steel, steel, aluminum, copper, etc.
- + The preliminary removal of large burrs and finishing of surfaces in one pass.
- + Breaking edges/finishing of metal with a brush.
- + Removal of the oxide skin with a special brush.
- + Low tooling costs and very low energy consumption.
- + Maximum user friendliness and optimal view of the machining process.

Specifications:

Table opening	0 - 4"
Throughput	Up to 25 fpm
Brush diameter	12" (12" length)
Adjustable contact roller diameter	6"
Applications	Deburring, Finishing, Oxide Skin Removal, and Edge Rounding

+ Deburring



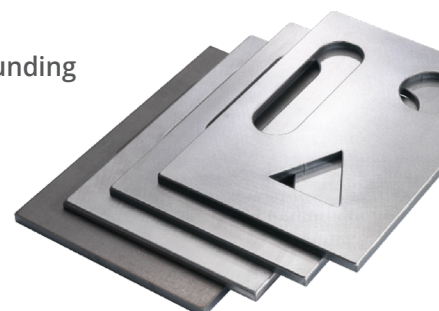
+ Finishing

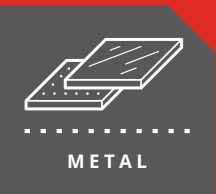


+ Oxide skin removal



+ Edge rounding





42 SERIES

For ultimate deburring, finishing, edge rounding, laser oxide removal, and heavy slag removal. Discover the ultimate machine for uniform deburring, edge rounding, and finishing of your products. Reade everything about the Timesavers 42 Series RB below. The 42 Series is the most popular and award winning Timesavers machine.



This machine has been developed for people who want only the best

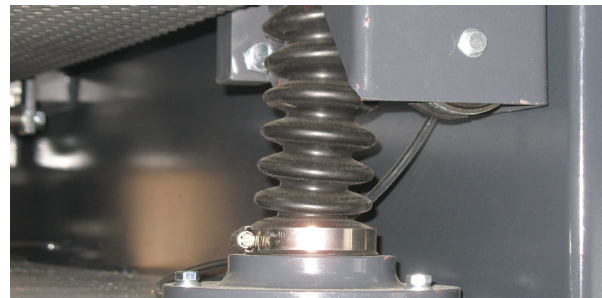
The 42 RB series offers the solution for manufacturers who supply premium quality products. This top quality is achieved through a multi-rotating brush machine with eight abrasive flap brushes that deburr uniformly and round the edges of the metal perfectly. This makes it possible to achieve a radius of 2 mm on mild steel and even more on softer material like aluminum.

The Timesavers Rotating Brush Machine

This deburring machine can also be provided with one or more abrasive belt heads and therefore it will perfectly remove very large burrs and/or it will guarantee the perfect finish. The machine is suitable for machining punched, laser-cut and plasma-cut part and even 3D and milled parts with deep pockets. With the use of a standard vacuum table with automatic vacuum control also small parts (from 2") up to large parts, up to 63" can be machined. The materials that can be machined include stainless steel, aluminum, zincor, zinc and laser film products. Available in this machine segment is the use of Cobots and integration in an Industry 4.0 / Smart Industry software platform.

Do you want to know more about the Timesavers Rotating Brush Machine and its performance?

Contact Timesavers' experts for professional advice.



Available configurations:

RB	52"	63"
DRB	52"	63"
RBD	52"	63"
DRBD	52"	63"
DDRBB	52"	63"
DDRBD	52"	
HDRB	52"	

Specifications:

Number of heads	1 - 4
Head types	Drum, Rotating Brush, Hammerhead
Machine width	52" and 63"
Main drive motor	20 HP, 25 HP
Sanding belt length	75"

STANDARD VERSION:

- + Centralized and user friendly control panel.
- + Automatic table opening of 0 - 4".
- + Carousel rotating brush heads equipped with 4 brushes rotating to the left and 4 to the right.
- + Frequency-controlled conveyor belt with a speed up to 25 fpm.
- + Window panels and lit interior for process observation.
- + Brushes with an extremely long service life no less than 3000 hours.
- + LED beams on the infeed and outfeed that show the machine status.
- + Available with 1 or 2 abrasive belt contact roller heads.
- + Vacuum table with access for internal cleaning.
- + Quick exchange system for brushes and abrasive belts.
- + U.L. certified.

APPLICATIONS AND BENEFITS:

- + The removal of burrs on laser, plasma or water jet, punched, cut parts, machined and routed parts.
- + Stainless steel, steel, aluminum, copper, etc.
- + Deburring of Zintec, galvanized and plated material, aluzinc, alclad, incl. ink-marked parts.
- + Uniform and controllable side radius for, for example, the aerospace, catering and medical industries.
- + Use of Cobots integration in an Industry 4.0/Smart Industry software platform.

Specifications:

Table opening	0 - 4"
Throughput	Up to 25 fpm
Brush diameter	14"
Adjustable contact roller diameter	7", 11", & 18"
Applications	Deburring , Finishing, Edge Rounding

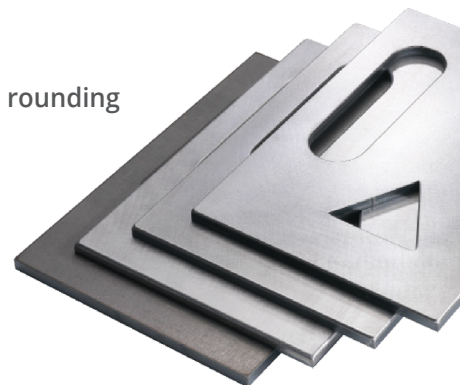
+ Deburring

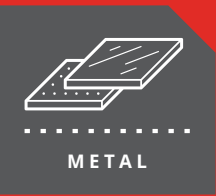


+ Finishing



+ Edge rounding





ROTARY BRUSH

Both the 32 & 42 Series Rotary Brush machines can be configured for metal finishing or deburring by using any combination of four wide belt and brush heads. This heavy duty series of machines includes automatic raise/lower for each of the sanding heads for ease of use.



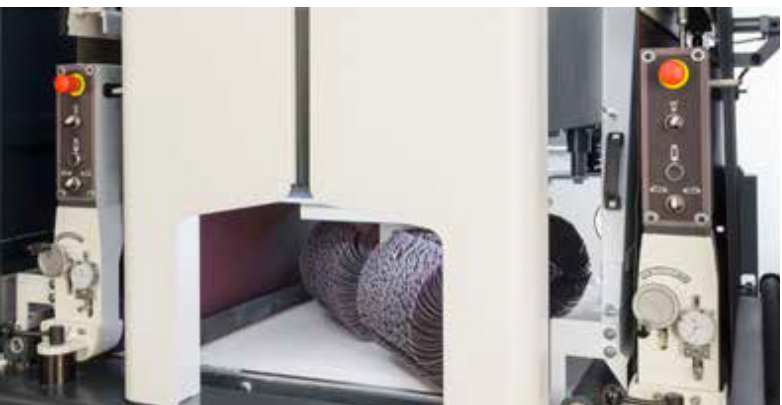
Timesavers offers rotary brush solutions in our 32 & 42 Series that have machine widths of 43" and 52". The Rotary Brush Machine is a great add to any line that needs a fully deburred part. The machines form the new standard in deburring, edge rounding and finishing technology for a broad range of materials.

Very small parts can be machined due to the use of a vacuum table

Much attention has been paid to the ease of use and user comfort with regard to these stylish and efficient deburring and finishing machines. The result is a machine that can be operated intuitively and easily. In addition, consumable use is low, the machines are energy efficient and the price quality ratio is optimal. The machining process can be easily observed because of the angled control panel and the large window.

The ultimate deburring and finishing machine

Our innovative high-quality deburring and rounding technologies ensure that the latest deburring machine from the Timesavers 32 & 42 series are the perfect machines for the metal machining industry.



Available configurations:

RB	43"	52"
DRB	43"	52"
DRBD	43"	52"

Specifications:

Number of heads	1 - 3
Head types	Drum, Rotating Brush
Machine width	43", 52"
Main drive motor	10 - 30 HP
Number of brushes	4 or 8 (quick to change brush system)

STANDARD VERSION:

- + Machine working width: 43" or 52", model dependent.
- + Efficient ergonomic operation through a user friendly Siemens HMI only on 43" model only.
- + Vacuum table for machining smaller products.
- + The vacuum table has an integrated cleaning cycle. (43" only).
- + LED beam on the infeed side that indicates the machine status. (43" only).
- + Frequencycontrolled motors for flexibility during the process.
- + Easy to replace brush units.
- + Various brush types are possible for multifunction use of materials.
- + Automatic adjustable table height: 0 - 4".
- + Conveyor speed from 0-25 fpm.
- + U.L. Certified.

APPLICATIONS AND BENEFITS:

- + 4-8 Brushes depending on model.
- + For the removal of burrs on laser, water jet, punched and cut products.
- + Material that can be machined: stainless steel, steel, aluminum, copper, etc.
- + The preliminary removal of large burrs and finishing of surfaces in one pass.
- + Breaking edges/finishing of metal with a brush.
- + Low tooling costs and very low energy consumption.
- + Maximum user friendliness and optimal view of the machining process.

Specifications:

Table opening	0 - 4"
Throughput	0 - 25 fpm
Brush diameter	12" (12" length)
Adjustable contact roller diameter	6"
Applications	Deburring, Finishing, Oxide Skin Removal, and Edge Rounding

+ Deburring



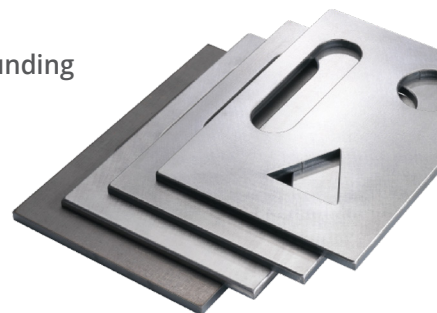
+ Finishing



+ Oxide skin removal



+ Edge rounding





METAL

31 (LYNX) SERIES

The 31 Series deburring machine (formerly known as the 31 Series LYNX) is available in a width of 19" and 37". The machine is suitable for deburring and finishing metal.



Two widths and innumerable possibilities

The 31 Series machine is engineered and designed to machine your exact needs. The 19" machine is available in up to four heads, while the 37" is available up to three. These machines are equipped with a powerful sanding belt and is the ideal machine for grinding and finishing square pipes and sheet steel. The 37" can be produced with brush attachments.

The 31 Series, a complete Timesavers Machine

The 31 Series is a complete machine with an integrated coolant filter system to cool the metal products during machining. This ensures that the abrasive belt's service life is extended. The wet-working system uses filter paper to filter the coolant before it is recirculated. A high-pressure air system dries the metal products while they are exiting the machine.

Optimum machining process in combination with ease of use

The 31 series is the ultimate machine for fast and efficient deburring and finishing. The machine can be easily operated thanks to a well-organized and clear control panel.

APPLICATIONS AND BENEFITS:

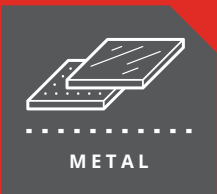
- + The removal of burrs on laser, water jet, punched and cut metal parts.
- + Suitable for stainless steel, steel, aluminum, titanium etc.
- + Can deburr and finish surfaces in one pass.
- + Edge breaking deburring of metal with an abrasive belt and brush.
- + Optimum production process and ease of use.

Available configurations:

D	19"	37"
DD	19"	37"
DDD	19"	37"
DDDD	19"	37"
DB	19"	37"
DDB	19"	37"
DDB	19"	37"
DDDB	19"	37"
DDBB	19"	37"

Specifications:

Number of heads	1 - 4
Head types	Drum, Brush
Machine width	19", 37"
Sanding belt length	60"
Throughput	15-45 fpm



41 (PUMA) SERIES

Timesavers 41 Series Machine (formerly known as the PUMA) is engineered, designed, and built for 24/7 operations. The 41 Series is available in one to four heads in any combination of wide belt abrasive heads and brush heads, and in a 52" width. Maintenance and upkeep on the 41 Series machines is designed to be simple; operators can easily access both sides of the machine, which allows them the ability to spray down the entire machine at the end of the shift to extend service intervals. The 41 Series is your best choice for the demanding needs of deburring and finishing in a production setting.



The 41 Series has been developed for high volume production

This wet, high-quality grinder is available with one to four heads in combination with wide abrasive belts, disc, and brush heads. This makes the machine extremely suitable for machining thin, oiled, greasy, and/or highly inflammable metal parts and materials.

Timesavers offers the 41 Series in four operating widths: 19", 37", & 52"

The 41 Series can be accessed on all sides and is easy to clean

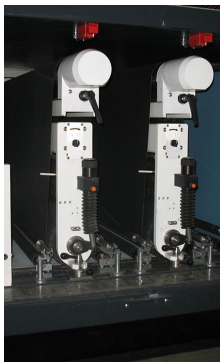
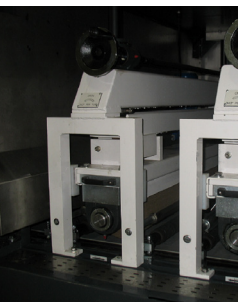
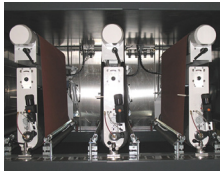
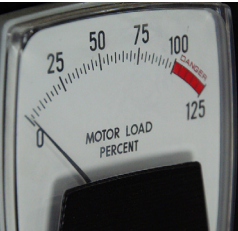
This wet grinding and deburring machine can be perfectly and easily maintained. The entire machine can be pressure cleaned daily due to the ease of maintenance.

Consistent Performance Guaranteed

The 41 Series is a great machine for running high volumes.

APPLICATIONS AND BENEFITS:

- + Machining greasy parts or products with die oil.
- + Products are washed automatically and leave the machine dry and dust-free.
- + Suitable for mixed material without having to change the abrasive media.
- + Removal of burrs on laser, water jet, punched and cut products.
- + Suitable material: stainless steel, steel, aluminum, copper, titanium, super alloys, etc.
- + The preliminary removal of large burrs and finishing of surfaces in one pass.
- + Efficient and ergonomically operated through a user friendly HMI.

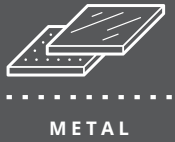


Available configurations:

D	52"
DD	52"
DDD	52"
DDDD	52"
DB	52"
DDB	52"
DBB	52"
DDDB	52"
DDDB	52"

Specifications:

Number of heads	1 - 4
Head types	Drum, Brush
Machine width	52"
Sanding belt length	75"
Throughput	15-45 fpm



MANUAL GRINDER

A versatile machine with vacuum hold down, and a rotatable head to swap between heavy grinding and edge rounding/deburring. Ideal for metalwork projects that require both deburring and grinding.



The manual grinder for perfect deburring, edge rounding and finishing of metal

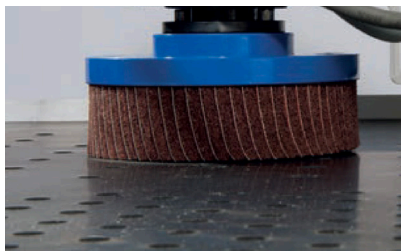
This ensures that an abrasive medium can be used for heavy-duty grinding on one side and, on the other side, for example, a brush for deburring, edge rounding and/or finishing. A mirror finish can also be created if required. Last but not least, the 180 degree rotating shaft makes rapid switching between different consumables easy.

The manual grinder is ergonomically responsibly designed for optimal operating conditions

The machine has a special mat with high friction surface to fix the parts during deburring and finishing. Smaller parts are kept fixed in their place through the integrated vacuum.

Link the operating ease of the manual grinder to an increased production capacity

Get information from Timesavers' experts. They will gladly provide good advice.



Available configurations:

MG 51" x 31.5"

Specifications:

Number of heads	1
Head types	Disc / Cup
Disc diameter	6"
Rotating grinding attachment	180°

STANDARD VERSION:

- + Movable arm in 2 positions with weight compensation.
- + Grinding belt for the removal of rough burrs.
- + High friction mat for small parts.
- + The grinding dust is collected in a removable tray.
- + Frequency-controlled drive.
- + 50 x 30 in bench.
- + Weight approx. 600 lbs.
- + 400 V connection with vacuum table.
- + 1 HP main motor.
- + Side panels that can be adjusted with regard to height for personal protection and machining large parts.
- + U.L. Certified.

APPLICATIONS AND BENEFITS:

- + Long service-life flap brushes and therefore a reduction in material costs.
- + 3 - 4 times faster than manual deburring.
- + Uniform edge rounding/deburring.
- + Affordable starting model.
- + Optimum user friendliness.

Specifications:

Bench	51" x 31.5" 38" working height)
Vacuum area	12" x 10"
Maximum thickness of a part	2.5"
Power supply	3 HP / 400 V
Applications	Deburring, Finishing, and Edge Rounding

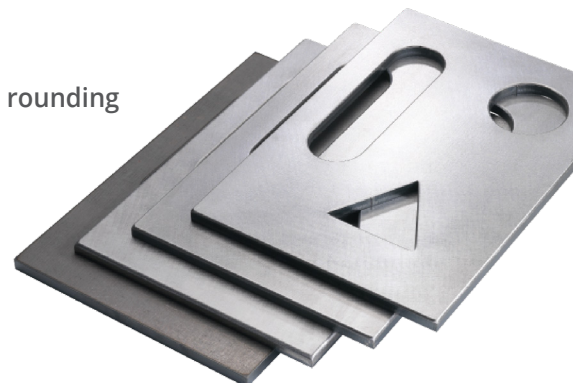
+ Deburring

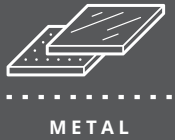


+ Finishing



+ Edge rounding





HAMMERHEAD / SLAG GRINDERS

A robust machine that uses a special head configuration of a hard drum, soft drum and optional brush heads to effortlessly rip through slag. Ideal for heavy slag/dross removal and deburring.



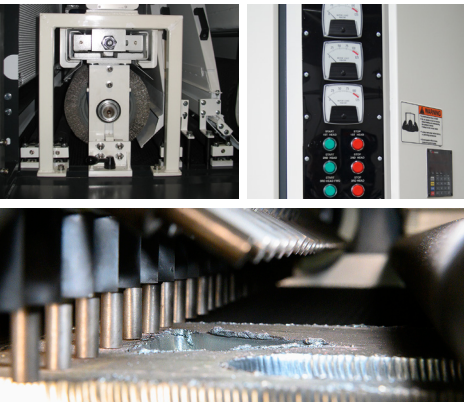
The Slag Grinder is perfect for the removal of heavy dross, and deburring of metal

The Slag Grinder is a tool that grinds off the dross created by plasma or water jet cutters.

The Slag Grinder is offered in different duty cycles. The 1200 slag grinder is available for lighter duty operations, while the 2200 Slag Grinder is for a more heavy duty shop.

The dry process Hammerhead machine is a slag grinding machine specializing in the removal of heavy slag on plasma cut steel parts.

The machine consists of replaceable flexible pins to remove the heavy slag/dross created by plasma cutting. This machine replaces the process of laborers scraping or hammering the dross off manually.



STANDARD VERSION:

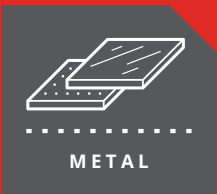
- + Hammerhead slag grinder now available in 37" & 52" widths.
- + Hammerhead machine is now available in four configurations.
- + Frequency controlled drive.
- + Great for labor savings.
- + Reduces dust inhalation and carpal tunnel in employees.
- + U.L. Certified.

Available configurations:

DD	37"	52"
DDB	37"	52"
H	37"	52"
HD	37"	52"
HDD	37"	52"
HDRB	37"	52"
Hddb	37"	52"

Specifications:

Number of heads	1 - 4
Head types	Hammerhead, Rotational Brush, Drum
Opening	0-5"
Feed Speed	3 - 45 fpm.
Main Drive Motors	20 - 40 HP
Applications	Deburring, Slag Removal, Edge Rounding



DUST COLLECTION

Timesavers offers portable and full sized, stainless steel dust collectors. The portable WDC is ideal for small to mid-sized metalworking projects & mobile operations, while the stainless steel dust collectors work for large-scale metalworking projects & 24/7 operations.



Our Dust Collection units are meant for safe and efficient collection of various dusts from grinding and deburring operations.

The portable wet dust collectors are a truly portable dust collection system. Each unit utilizes water to the sanding particulate from the air.

WDC dust collectors have an auto-fill system. This allows for either auto or manual fill hook up.

Water is used as the filtering media which causes the metal particles to be captured in the tank while clean air exhausts from the units.



Available configurations:

PWDC-F5	5 HP	1,200 CFM	1 Inlet
Niagara-5	5 HP	2,400 CFM	1 Inlet
WDC-7	7.5 HP	2,250 CFM	1 Inlet
Niagara-10	10 HP	3,000 CFM	1 Inlet
Niagara-15	15 HP	4,000 CFM	1 Inlet
Niagara-25	25 HP	7,000 CFM	1 Inlet



REWARDS

FROM START TO FINISH

ESSAVERS[®]

TIME SAVERS

TIME SAVERS
SERIES 1200

1200



METAL



TIMESAVERS, LLC

11123 89th Ave North
Maple Grove, Minnesota USA
T +763 488 6600
info@timesaversinc.com
www.timesaversinc.com

